

## MATERIALS :

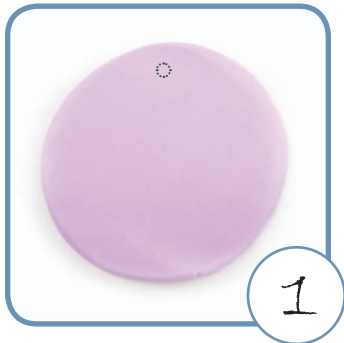
- ... Polymer clay
- ... Images\*
- ... Magazine clippings\*\*
- 1 Scissors
- ... Transfer medium: *Translucent Liquid Sculpey*
- 1 Paintbrush
- 1 Baking tray
- 1 Oven
- 1 Bowl filled with water
- ... Clay modeling tools
- 1 Polymer clay slicer
- 1 Beading awl or other needle-like tool



\* For best results, we recommend to work with images printed on a laser printer.

\*\* To be used only with liquid transfer mediums, such as *Translucent Liquid Sculpey*.

## Preparation :



1- Take the desired quantity of polymer clay, form it into a ball and then flatten it out using a pasta roller or a flat object until you reach the desired thickness (large enough to have a hole if you are making a bead). Model the clay to obtain the shape you want and make the hole for bead or pendant using a beading awl or other needle-like tool. You can also make the hole after completing the transferring process, however it is recommended to manipulate as little as possible the transfer surface prior to baking as it could damage it.



Make some baking tests first because the length of time and the temperature setting can vary depending on the type of oven.

## Image transfer :

Here are three different methods (A, B or C) to do an image transfer on polymer clay. Choose the one that you find most convenient for your project.

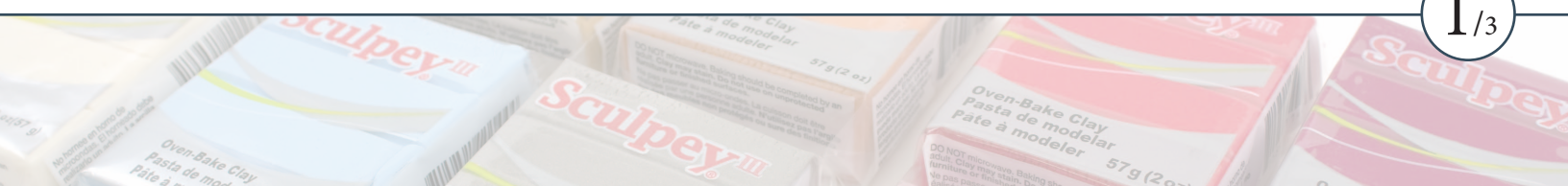
### A- Image transfer with water :



A1- Choose the image to be transferred and cut only the part you wish to see on your project.



A2- Place the image face down on the polymer clay. Gently press on the surface of the image so that it is pasted and positioned correctly on the polymer clay.





**A3-** Using your finger and a little amount of water, dampen the backside of the paper. Repeat this step until the paper is moistening with water. Starting from the center of the image, make small circular movements to remove layers of paper. Warning: be careful not to apply too much pressure as it could tear the transfer. Occasionally add some water. Continue this procedure starting from the center and working outwards until all paper is removed from the polymer clay.

A3

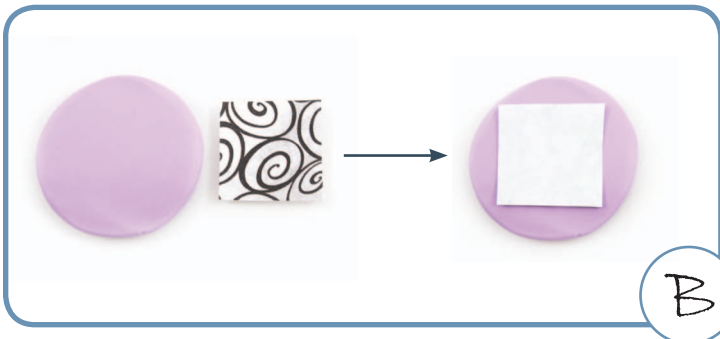
Place your project on the baking tray and bake as indicated on the polymer clay packaging.



## B- Image transfer with resting time:



A short resting time (see illustration 1) will give you a textured effect without color. A long resting time (see illustration 2) will give you an image transfer a little clearer than the transfer with water.



B

**B-** Choose the image you wish to transfer.

Place it on the polymer clay face down. Gently press on the surface of the image so that it is pasted and positioned correctly on the polymer clay.



B1

**B1-** For a textured effect without color, wait 15 minutes. After the resting period, grasp one corner of the image and quickly pull it off. Place your project on the baking tray and bake as indicated on the polymer clay packaging\*.

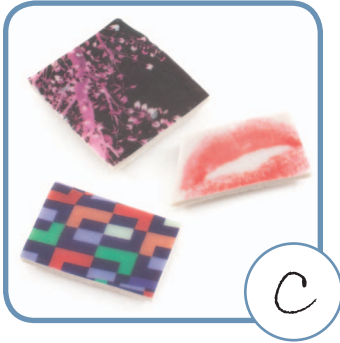


B2

**B2-** For an image transfer, let the image rest on the polymer clay for a period of at least 3 hours. Remove the image and then bake the polymer clay as indicated on its packaging.

\*When baking is finished, you can intensify the texture by brushing on a coat of transfer medium in which you will have incorporated color tints. Then, bake your project once again as indicated on the transfer medium packaging.

## C- Image transfer with transfer medium and magazine clippings:



C- Choose the magazine image you wish to transfer.

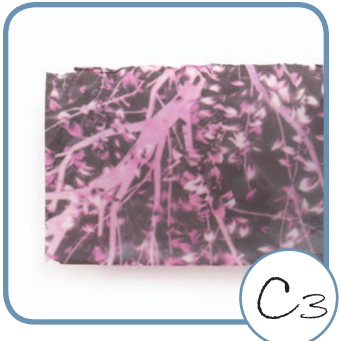


C1- Using a paintbrush, apply a uniform coating of transfer medium on your image. Warning: A coat that is too thick will result in your transfer being blurred, whereas a coat that is too thin will make it fragile.

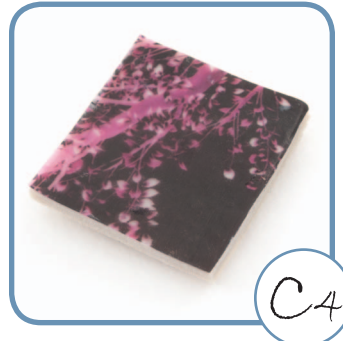


C2- Let the image rest for a few minutes and then place it on the baking tray, the transfer medium facing upwards. Bake in your oven following the indications of the transfer medium. When it's ready, take out the image from the oven and immediately plunge it in water. Let the paper soak in for approximately 10 minutes.

Lay down the image on your working surface face down. If the image seems to peel off by itself, just take it off. If not, starting from the center of the image, make small circular movements with your finger to remove layers of paper. (Refer to step A3)



C3- Continue this procedure starting from the center and working outwards until all paper is removed from the image. Lay your transfer down flat and let it dry.



C4- Cut the image in the shape you decided on\*. Lay it on the polymer clay. Place your project on the baking tray and bake it as indicated on the polymer clay packaging.

\*Immediately after baking, you can also slice off the excess clay and paper with your sharp blade.

## Finishing:



If necessary, apply a coat of transfer medium on the surface of your project with your paintbrush and bake it in the oven as indicated by the clay manufacturer. This will give it a smooth glaze finish.

